



Original BMW lightweight brake discs E70*, E71*, E89*, F01*, F03*, F07*, F10, F11

* Not available for all model versions

Parts

Management

Marketing

Sales of
new Cars

Sales of
used Cars

Aftersales

Administration

Product description

The patented, two-part lightweight brake disc is an innovation in which a special bonding process is used to bond the grey cast iron friction ring with the deep-drawn aluminium brake chamber. The Original BMW lightweight brake discs offer maximum agility and sportiness, especially for sporty customers. They are the perfect combination of driving dynamism, comfort and safety. Their lower weight compared to conventional brake discs means improved handling and also less fuel consumption. The lightweight brake discs also have excellent heat absorption properties, which translates into very little distortion of the brake discs and therefore even better performance with extended use.

Sales features/benefits

- Positive effects on driving dynamism and comfort due to reduced weight.
- Avoidance of corrosion on the brake chamber.
- Reduced fuel consumption and CO2 emissions.
- Minimal distortion, improved performance and an extended service life.

Material

- Grey cast iron
- Aluminium

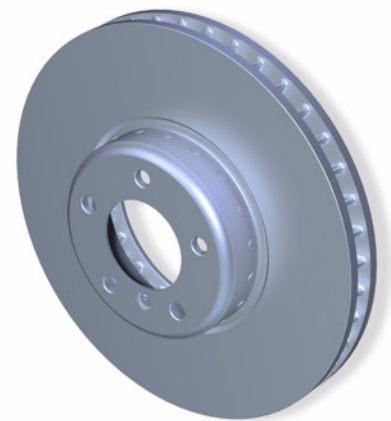
Technical information

For E70 (X5), E71 (X6), E89 (Z4), F01 (7 Series), F03 (7 Series high-security vehicle), F07 (5 Series GT), F10 (5 Series saloon) and F11 (5 Series Touring).



Note

Since this two-part, lightweight-design brake disc is protected for BMW under patent law, at least in Germany, these brake discs can only be obtained in BMW quality via the BMW retail organisation. Original BMW lightweight brake discs are perfectly coordinated with the vehicle and always represent the very latest innovations and technology. These products have only been approved following countless tests in everyday road driving situations, on tough pistes and in all kinds of weather conditions. ◀



Lightweight brake discs



Safety note

Due to the ever-increasing competition, "reproductions" are being offered more and more which, from the outside, are barely distinguishable from the originals. Higher numbers of customer complaints are an indicator of the growing use of copies. This is why you should only ever use Original BMW parts!

No type approval is required for Original BMW lightweight brake discs. ◀

Availability
immediately

EPC DVD
immediately

Part numbers
see EPC

Complete price package

For a detailed tender preparation, find the complete price package on the KSD DVD.
Please refer to your price system or the latest price publications for the latest prices.